


Type H8C Load Cell



Short description



- Nickel plated alloy steel IP67 shear beam load cell (100 kg, 250kg are bending beam load cells)
- Adhesive sealed
- Suitable platform weighing, bed weighing, etc.
- High accuracy
- High reliability
- Current calibrated (sc-option)

 test certificate no. TC8012 Revision 1
C of C no R60/2000-NL1-12.12

 Certificate no. 12-028

Available models

| Capacity | Accuracy | Full article description |
|----------|----------|-------------------------------|
| 100kg | C3/C4/C5 | H8C-C3/C4/C5-100kg-4B(-SC-W6) |
| 250kg | C3/C4/C5 | H8C-C3/C4/C5-250kg-4B(-SC-W6) |
| 500kg | C3/C4/C5 | H8C-C3/C4/C5-500kg-4B(-SC-W6) |
| 1t | C3/C4/C5 | H8C-C3/C4/C5-1.0t-4B(-SC-W6) |
| 1.5t | C3/C4/C5 | H8C-C3/C4/C5-1.5t-4B(-SC-W6) |
| 2t | C3/C4/C5 | H8C-C3/C4/C5-2.0t-4B(-SC-W6) |
| 2.5t | C3/C4/C5 | H8C-C3/C4/C5-2.5t-6B(-SC-W6) |
| 3t | C3/C4/C5 | H8C-C3/C4/C5-3.0t-6B(-SC-W6) |
| 5t | C3/C4/C5 | H8C-C3/C4/C5-5.0t-6B(-SC-W6) |
| 10t | C3/C4/C5 | H8C-C3/C4/C5-10t-6B(-SC-W6) |

Specifications and dimensions are subject to change without notice and do not constitute any liability whatsoever.

Type H8C Load Cell

Detailed specifications H8C

| | | | | | |
|--|---|--|----------------------|--------------------------------|----------|
| Accuracy class | | OIML R60 C3 | OIML R60 C4 | OIML R60 C5 | |
| Output sensitivity (= FS) | mV/V | 3.0 ± 0.003 | | | |
| Maximum capacity (E _{max}) | t | 0.1, 0.25, 0.5, 1, 1.5, 2, 2.5, 3, 5, 10 | | 0.1, 0.25, 0.5, 1, 1.5, 2, 2.5 | 3, 5, 10 |
| Max.number of load cell intervals | n _{LC} | 3000 | 4000 | 5000 | |
| Ratio of min. LC verification interval | Y = E _{max} / v _{min} | 10000 | 15000 | 20000 | 18000 |
| Combined Error | %FS | ≤± 0.023 | ≤± 0.0175 | ≤± 0.014 | |
| Minimum dead load | Of E _{max} | 0% | | | |
| Safe overload | of E _{max} | 150 % | | | |
| Ultimate overload | of E _{max} | 300 % | | | |
| Zero balance | of FS | < ± 1.0 % | | | |
| Excitation, recommended voltage | V | 5 ~ 12 | | | |
| Excitation maximum | V | 18 | | | |
| Input resistance | Ω | 350 ± 3.5 | | | |
| Output resistance | Ω | 350 ± 3.5 | | | |
| Insulation resistance | MΩ | ≥5000 (at 50VDC) | | | |
| Compensated temperature | °C | -10 ~ +40 | | | |
| Operating temperature | °C | -35 ~ +65 | | | |
| Storage temperature | °C | -40 ~ +80 | | | |
| Element material | | Nickel plated alloy steel | | | |
| Ingress Protection (acc. to EN 60529) | | IP67 | | | |
| Recommended torque on fixation | Nm | M12: 75 | M18:500 | M24:750 | |
| ATEX classification (optional) | | II1G Ex ia II1C T4 | II1D Ex iaD 20 T73°C | II3G nL IIC T4 | |

Wiring

Wiring:

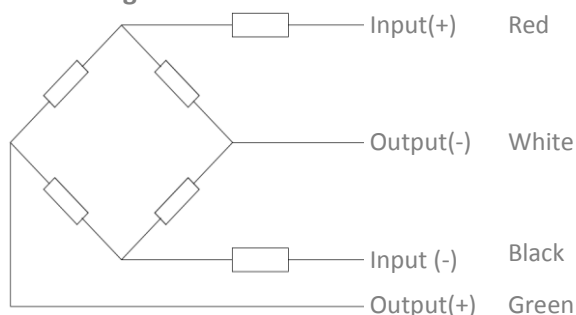
Shielded, 4 or 6 conductor cable

Cable diameter: Ø5mm.

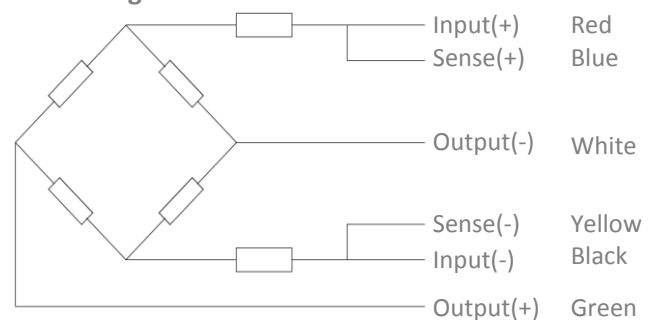
Standard cable length for 100kg – 2t: 4m and 6m for the higher capacities.

Shield in not connected to the element.

4-wire diagram



6-wire diagram



Specifications and dimensions are subject to change without notice and do not constitute any liability whatsoever.

Type H8C Load Cell

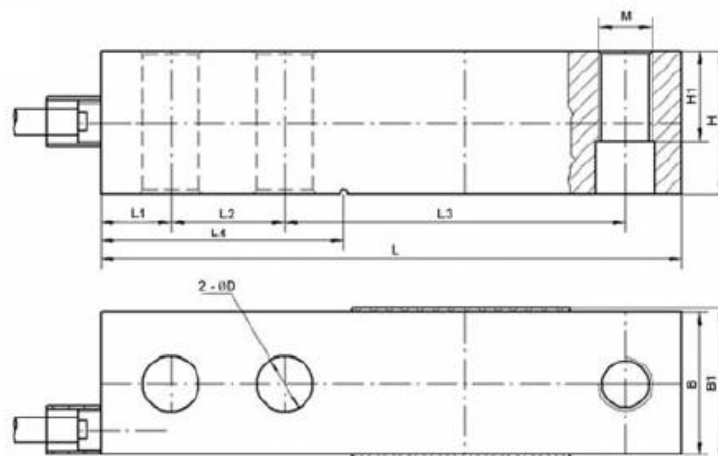
Ordering Info:

H8C - C3 - 1.0t - 4 - - BX - SC - XX

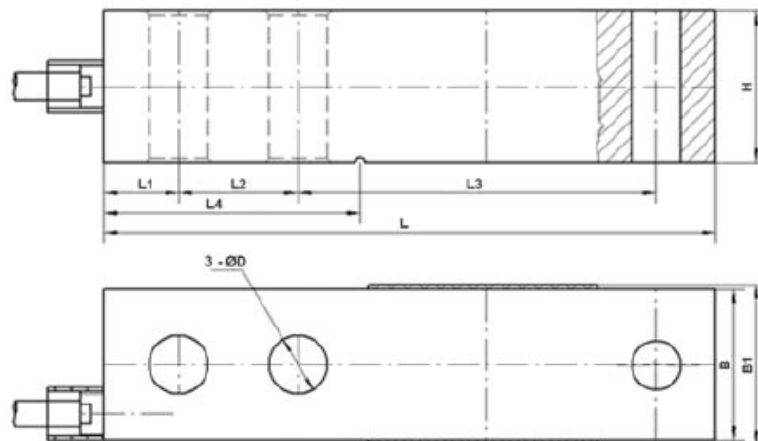
- Option XX. No mark is standard version, W4 is through loading hole, W6 is "T" end loading hole.
- Option SC (standard current).
- Cable option. No mark is 4 conductor cable and with a "6" a 6 conductor cable.
- Thread option. No mark is Metric Thread and "Y" is Imperial thread.
- Length of the cable in meters.
- Nominal capacity (E_{max}) for Metric in t(on) and Imperial in lbs up to 500lbs and above in K(ilo)lbs.
- Maximum load cell divisions.
- Load Cell model.

Dimensions in mm

Standard version



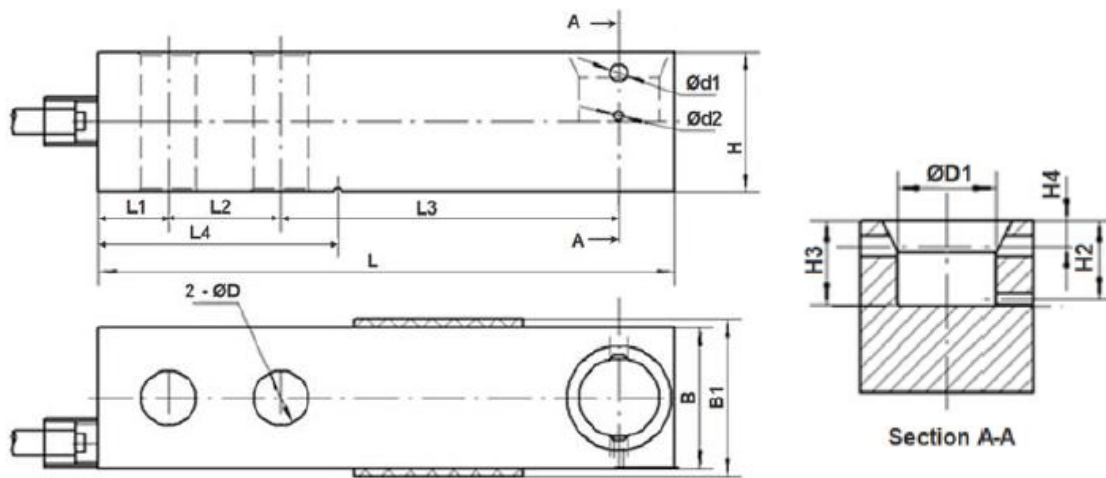
Option W4 version (Through loading hole)



Specifications and dimensions are subject to change without notice and do not constitute any liability whatsoever.

Type H8C Load Cell

Option W6 version ("T" end loading hole)

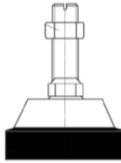
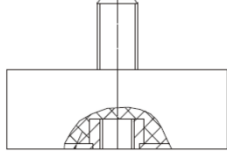
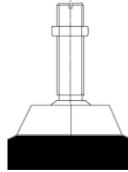
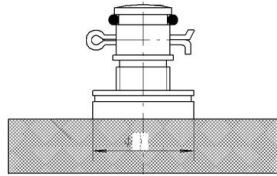
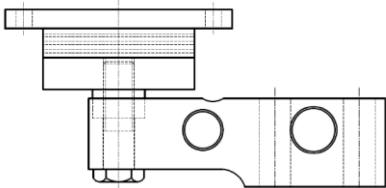
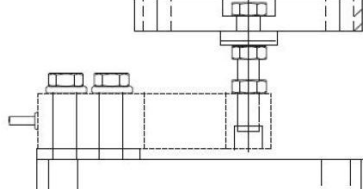
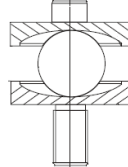
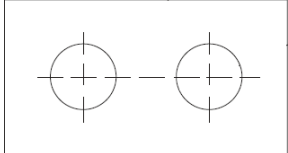


| Dimension Capacity | L | L1 | L2 | L3 | L4 | B | B1 | H | H1 | H2 | H3 | H4 | ØD | Ø D 1 | Ø d 1 | Ø d 2 | M |
|--------------------|-------|------|------|-------|-------|------|------|------|------|------|------|-----|------|-------|-------|-------|------|
| 0.1t-2t | 130 | 15.8 | 25.4 | 76.2 | 54.2 | 31.8 | 34 | 31.8 | 15.8 | 14.5 | 15.8 | 4.8 | 13.5 | 18 | 4 | 2 | M 12 |
| 2.5t-5t | 171.5 | 19.1 | 38.1 | 95.3 | 77.2 | 38.1 | 40 | 38.1 | 18.8 | 17.5 | 18.8 | 4.8 | 19.8 | 25 | 4 | 2 | M 18 |
| 10t | 222.3 | 25.4 | 50.8 | 120.7 | 101.6 | 50.8 | 52.4 | 50.8 | 25.4 | - | - | - | 26 | - | - | - | M 24 |

Specifications and dimensions are subject to change without notice and do not constitute any liability whatsoever.

Type H8C Load Cell

Available accessories

| | |
|--|---|
| <p>HJ-8-201-0.1-10t foot</p> <ul style="list-style-type: none"> • $\varnothing 60-86$ and height 92-112 mm • Nickel plated alloy steel • Adjustable height |  |
| <p>HJ-8-203-0.5-2t foot</p> <ul style="list-style-type: none"> • $\varnothing 67$ and height 46 mm • Nickel plated alloy steel • Easy installation |  |
| <p>HJ-8-213-0.5-2t foot</p> <ul style="list-style-type: none"> • $\varnothing 60$ and height 62 mm • Nickel plated alloy steel • Adjustable height |  |
| <p>HJ-8-236-0.25-5t foot</p> <ul style="list-style-type: none"> • $\varnothing 80$ and height 50 mm • Nickel plated alloy steel • Adjustable mount • Easy installation |  |
| <p>Elastomer-0.5-2t</p> <ul style="list-style-type: none"> • Easy installation • Suitable for shock load |  |
| <p>HM-8-402-0.5-5t mount</p> <ul style="list-style-type: none"> • Nickel plated alloy steel • Adjustable mounting height • Easy installation |  |
| <p>HY-8-102-0.5-5t</p> <ul style="list-style-type: none"> • Nickel plated alloy steel • Easy installation • Good self-alignment ability |  |
| <p>HD-8-301-0.5-5t spacer plate</p> <ul style="list-style-type: none"> • Nickel plated alloy Steel |  |

Specifications and dimensions are subject to change without notice and do not constitute any liability whatsoever.